




## RelaxSpace Pod Electrical & Room Requirements – 60Hz, North America

**\*\*IMPORTANT\*\*** Please confirm if your space meets the following guidelines when placing your order so we can plan appropriately for delivery- Room entryway: 33" or larger (narrowest dimension inside doorway, from hinge to frame) Hallway / space outside of room: 75" or larger

### Technical Specifications

MODEL	IMAGE	SPECS	WEIGHT	VOLTAGE	PHASE	Amps
RelaxSpace Wellness Pod		<b>L- 92"</b> <b>W- 32"</b> (36" w/ touchscreen installed) <b>H- 69"</b>	<b>310 lbs.</b>	<b>110 Volts / 60 Hz</b>	<b>Single</b>	<b>3 amps</b>

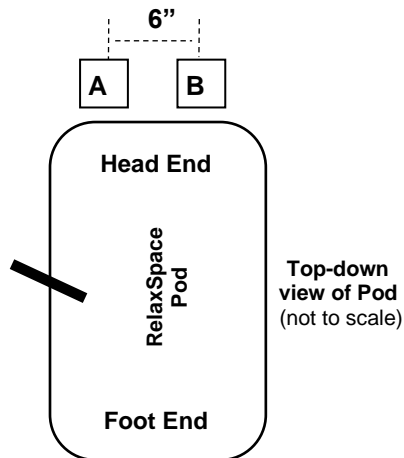
### Electrical Requirements **\*\*IMPORTANT:** All items are required for EACH unit\*\*

- **A:** Standard 110V, 15A 3 prong duplex outlet. **A** on diagram.
- **B:** CAT-5 or CAT-6 terminated network jack (able to connect to network room). **B** on diagram.
  - \*Required for software updates, technical support, and proactive monitoring.

### Electrical Wiring Diagrams



Standard, 110V Wall Outlet with CAT-5 or CAT-6 Jack

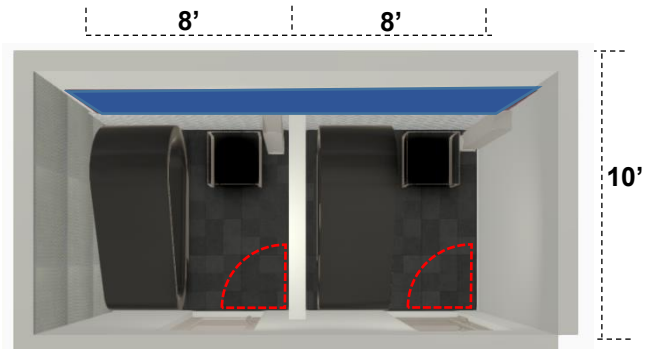
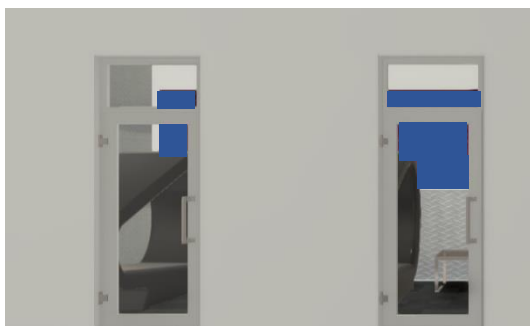


**\*Small Exhaust Fan** (50 – 80CFM) also recommended in RelaxSpace Pod room to remove scent. Rated less than 1.5 max sones (low noise).

\*Unique set of items A & B required **FOR EACH** RelaxSpace Pod. If necessary, location of outlets above may be moved within +/- 5". Call 1-727-536-5566 for details.

### Room Dimensions

Recommended 8' x 10' room per RelaxSpace Pod with glass door to allow for both privacy and visibility (\*minimum room size is 6'6" x 8'). Check ADA guidelines for compliance.





## Standard vs Non-Standard RelaxSpace Pod Delivery

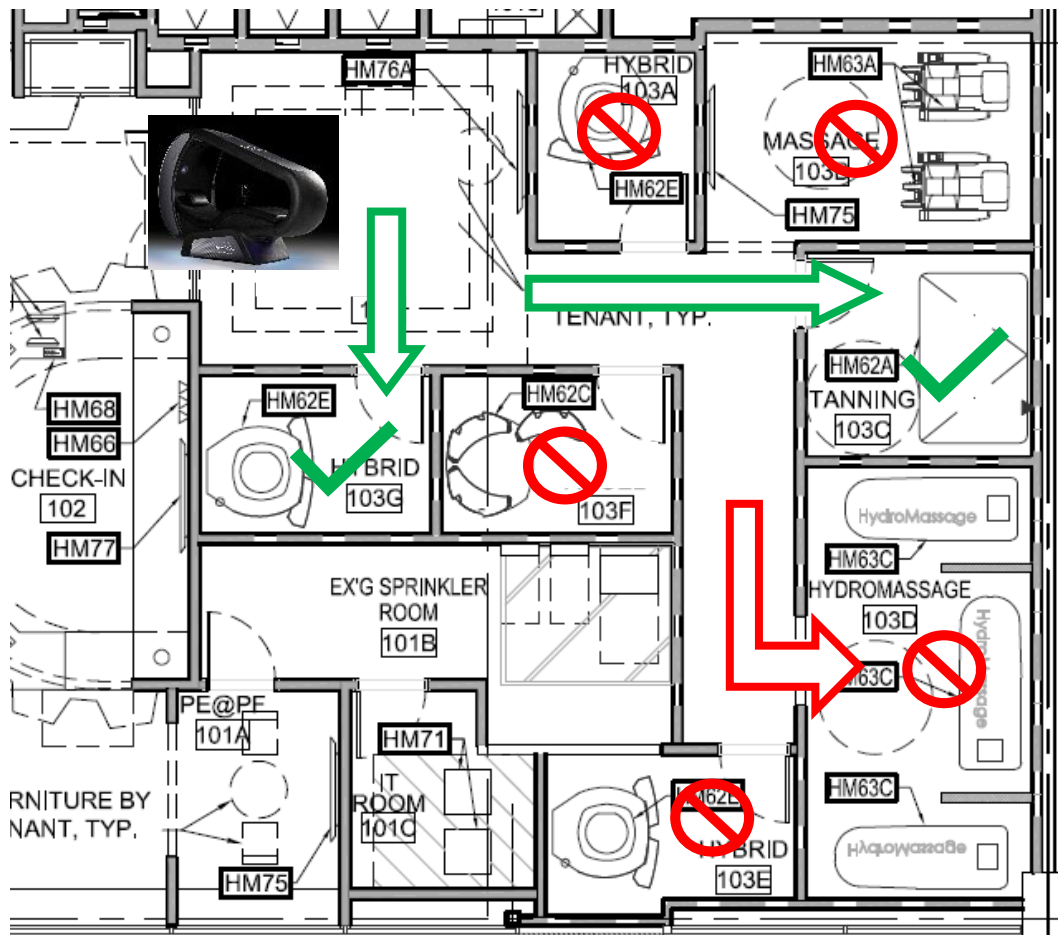
**\*\*IMPORTANT\*\*** Please confirm if your space meets the following guidelines when placing your order.

### Standard Delivery:

- Room Entryway: 33" or larger (narrowest dimension inside doorway, from hinge to frame)
- Hallway / Area Outside of Room: 75" or larger
- No Tight Turns or Narrow Hallways

### Non-Standard Delivery:

- If these minimum dimensions are not met, additional manpower and expenses will be required during the delivery process. Please speak with your order processor for additional information.



Standard RelaxSpace Delivery



Non-Standard RelaxSpace Delivery